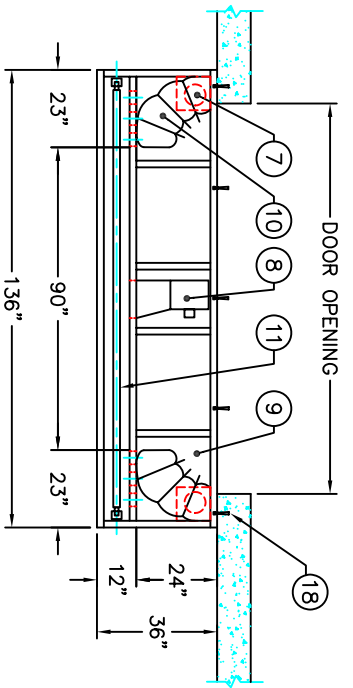
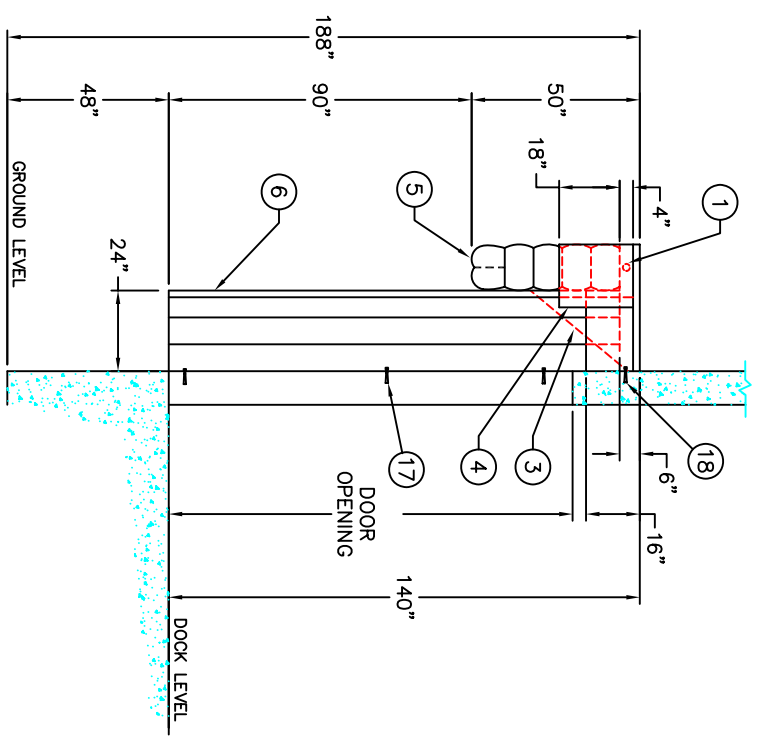


1 STANDARD UNIT DETAIL
ISOMETRIC VIEW
N.I.S.

| No. | DESCRIPTION |
|-----|---|
| 1 | TORSION SPRING EXTERIOR ADJUSTMENT |
| 2 | GALVANIZED STEEL SIDE SUPPORT |
| 3 | HEAD BAG RETRACTION CORD |
| 4 | STORAGE CURTAIN |
| 5 | HEADER AIR BAG |
| 6 | VERTICAL AIR BAG - SIDE VIEW |
| 7 | GALVANIZED AIR DUCT |
| 8 | 0.5 HP, 1 Ph., 115/230 V, 30/60 Hz, 1420-1600 RPM, 5.5-2.8 A MOTOR / BLOWER |
| 9 | VERTICAL AIR BAG BOTTOM RETRACTION |
| 10 | VERTICAL AIR BAG - TOP VIEW |
| 11 | TORSION SPRING |
| 12 | TRIM ANGLE |
| 13 | YELLOW GUIDE STRIPE |
| 14 | CURTAIN STIFFENER |
| 15 | FLAT BRACKETS |
| 16 | ANGLE BRACKETS |
| 17 | 3/8" x 1 7/8" SLEEVE ANCHORS |
| 18 | 3/8" x 3" SLEEVE ANCHORS |



3 STANDARD UNIT DETAIL
PLAN VIEW
SCALE: 1" = 1'-0"



2 STANDARD UNIT DETAIL
SIDE VIEW
SCALE: 1" = 1'-0"

NOTES: 1) ALL DIMENSIONS ARE STANDARD AND IN IMPERIAL SYSTEM.
2) UNITS CAN BE MANUFACTURED TO SUIT
3) DRAWINGS NOT TO BE SCALED.

| REV.# | DATE | DESCRIPTION | BY |
|-------|------|-------------|----|
| 1 | | | |

| | |
|----------------|------------------------------|
| LDC | |
| SERIES | DS50 |
| TITLE | AIR FRAME INFLATABLE SHELTER |
| DISTRIBUTED BY | |
| DATE: 07/16/07 | |
| SHEET | OF |
| DWG.# DS50 | REV. 0 |