

# SPECIFICATIONS SHEET



Series  D-650

E-650

Customer: \_\_\_\_\_

Date: \_\_\_\_\_ P.O. #: \_\_\_\_\_

Salesman: \_\_\_\_\_

Date Required: \_\_\_\_\_

Door Opening: \_\_\_\_\_"w x \_\_\_\_\_"h

End User: \_\_\_\_\_

Dock Height: \_\_\_\_\_"h Bumper Projection: \_\_\_\_\_

Tag: \_\_\_\_\_ # of Units: \_\_\_\_\_

Approach:  Level  Incline \_\_\_\_\_  Decline \_\_\_\_\_

Ship Via: \_\_\_\_\_

Airbag Fabric: \_\_\_\_\_ Colour \_\_\_\_\_

Collect  Prepaid  3rd Party

Blower Location:  A  B  C  D  E

Ship to: \_\_\_\_\_

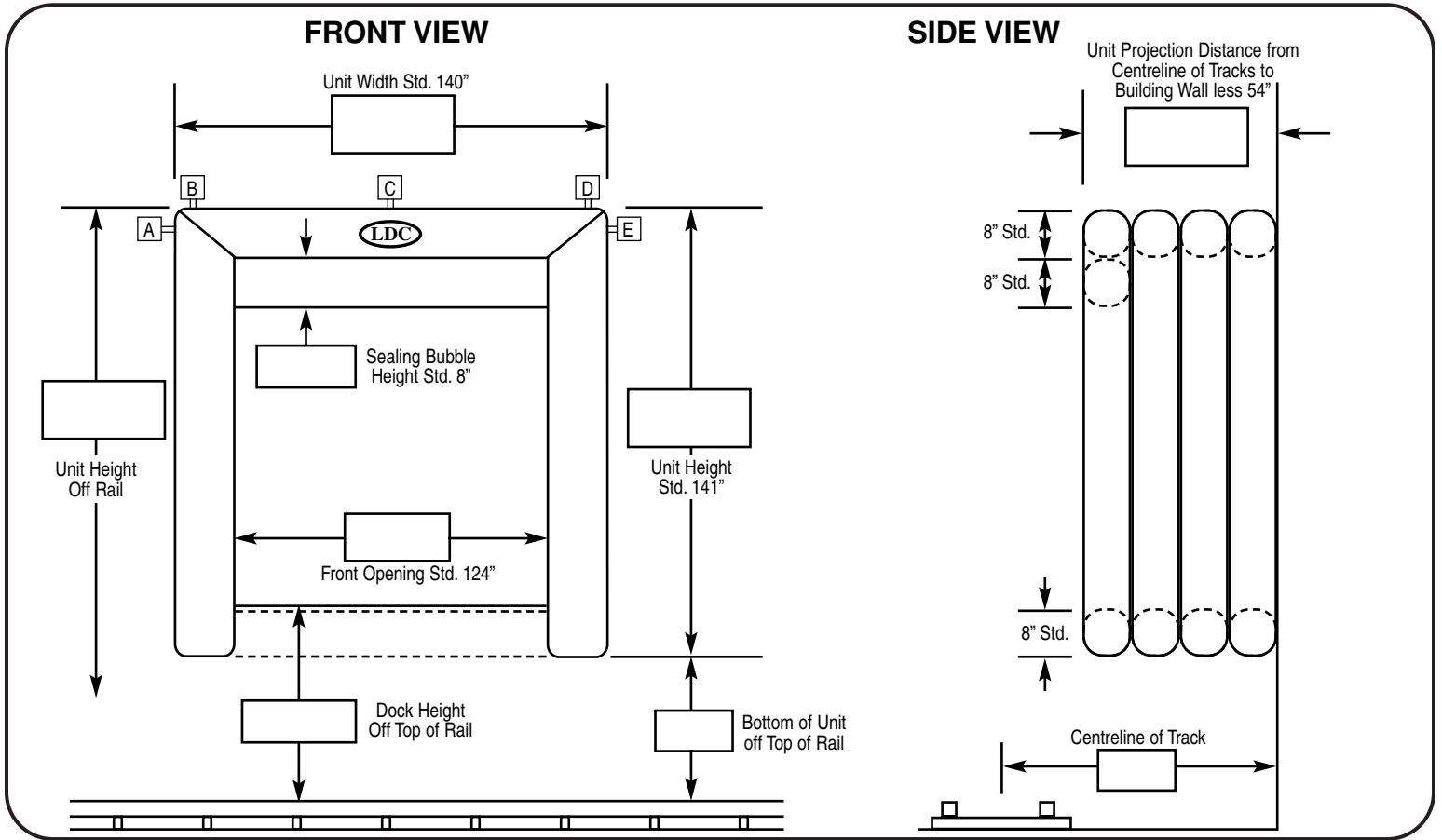
Limit Switch Kit  Yes  No

Limit Switch Includes:

Metal Box  On/Off Switch c/w Pilot Light

Metal Face Plate  Wiring Diagram

Limit Switch c/w Mounting Bracket



Options: \_\_\_\_\_

### Parts List

- 1 AIR BAG
- 1 1/2 HP. MOTOR C/W SIDE BRACKET & VELCRO
- 1 GALVANIZED MOTOR HOOD
- 1 2" X 8" X \_\_\_\_\_"
- 2 2" X 8" X \_\_\_\_\_"
- 4 RETRACTION TRACKS
- 12 9" TARP STRAPS C/W 12" CHAIN

### Hardware List

- 12 NYLON ROLLERS
- 9 3/8" x 3" Sleeve Anchors
- 26 3/8" x 1 1/8" Sleeve Anchors
- 350 ROOFING NAILS
- 1 INSTALLATION INSTRUCTION

Cut by: \_\_\_\_\_ Sewn by: \_\_\_\_\_

Assembled by: \_\_\_\_\_ Shipped by: \_\_\_\_\_

Inspected by: \_\_\_\_\_ # of Pieces \_\_\_\_\_

Approved for manufacturing by: \_\_\_\_\_

Date: \_\_\_\_\_