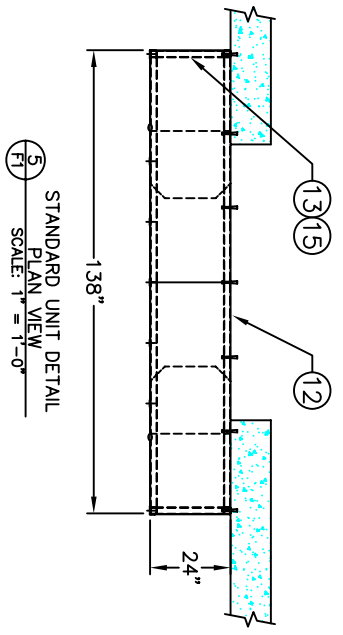
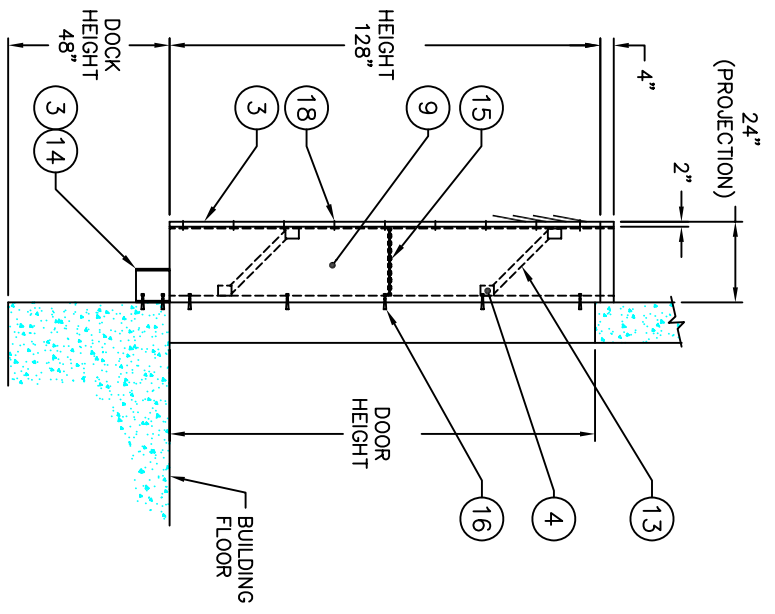


① STANDARD UNIT DETAIL FRONT VIEW



⑤ STANDARD UNIT DETAIL PLAN VIEW SCALE: 1" = 1'-0"



② STANDARD UNIT DETAIL SIDE VIEW

DESCRIPTION	
1	VERTICAL PANEL
2	HEADER PANEL
3	2" x 2" x 16 Ga. GALVANIZED ANGLE TRIM
4	GALVANIZED STEEL "U" BRACKET
5	PROJECTION MATERIAL
6	FIBER GLASS STAY
7	4" x 24" YELLOW GUIDE STRIPE
8	FOAM BEAD
9	COVER FABRIC
10	DOUBLE PLAY OF FABRIC ON IMPACT JOINT
11	EXTENDED WEAR FLAPS
12	2" x 2" x 3/16" HSS GALVANIZED TUBING
13	GALVANIZED EXTENSION ARM (HSS TUBING)
14	10" I-BEAM (10" LG.)
15	1/4" DIA. GALV. CHAIN (PLUS END HOOKS)
16	3/8" x 4" LG. SLEEVE ANCHOR BOLT
17	SIDE CURTAIN SUPPORT ASSEMBLY (3/16" DIA. GALV. CHAIN, RUBBER CORD, HOOKS)
18	#14 x 1" LG. TEK SCREW

NOTES: 1) ALL DIMENSIONS ARE STANDARD AND IN IMPERIAL SYSTEM.
 2) UNITS CAN BE MANUFACTURED TO SUIT.
 3) DRAWINGS NOT TO BE SCALED.



SERIES	D-500
TITLE:	RETRACTABLE TRUCK SHELTER
DISTRIBUTED BY	

REV.#	DATE	DESCRIPTION	BY

DATE: 06/25/07	SHEET	OF	DWG.# D-500	REV. 0
----------------	-------	----	-------------	--------